



SHELLY SUMPTER
Muskogee County Treasurer

11th day of Sept 2023
Chairman Remigio J. Fox
Member Ken De
Member Keith
Attest Shelly Sumpter
County Clerk

August 9, 2023



Tax Deputies
Jaime Duerson
Brenda Fullwood
Montana Leal
Laura Stewart

Bookkeeping Deputies
Jessica Duerson
Lacy Rosson

1st Deputy
Sarah Hernandez

**Office Manager/
Tax Supervisor**
Jessica Smith

**Law Enforcement
Deputy**
Sheila Dause
Assistant Deputy
Jaelyn Watson

Board of County Commissioners
400 W. Broadway, Suite #100
Muskogee, OK 74401

RE: Request for conveyance of County-owned property by Town of Warner

Dear Sirs,

Town of Warner has requested the following parcel:

- PID #6860-28-041-010-2-040-09
Legal Description: WARNER OT S20 LOT 10 & ALL OF LOT 11
BLOCK 41

This property was acquired by the County through the 2023 tax lien sale. Please see the attached property record card and block & street map for more info on this parcel.

This property is now eligible for a Commissioner's Sale or may be declared as excess property and deeded.

Thank you,

Shelly Sumpter
Muskogee County Treasurer

brenda.fullwood@muskogeetreasurer.org

From: WARNER HALL <townadmin@crosstel.net>
Sent: Tuesday, August 8, 2023 2:19 PM
To: brenda.fullwood@muskogeetreasurer.org
Subject: Lot

The Town of Warner wishes that Muskogee County give ownership of lot Warner OT S20 Lot 10 & All of Lot 11 Block 41 in the Town of Warner. This property was up for tax sell. The Town of Warner has maintained this property and has \$5,843.27 owed in abatement liens against this property.

The property is located between two Town of Warner properties and could be of great use for the Town of Warner and the Warner Utility Authority.

We asked that you please consider deeding the property to the Town of Warner so we can make use of the property and make use of our citizen's funds.

Johnny Lewis, Town Administrator
Town of Warner
PO Box 170
211 8th Street
Warner, OK 74469
Cell: 918-869-6708
Office: 918-463-2696

As of: 8/9/2023

Property Owner**Name:** MUSKOGEE COUNTY-MC-RES**Property Information****Physical Address:****Mailing Address:** P.O. BOX 2307
MUSKOGEE, OK 74402-**Subdivision:** WARNER OT**Block / Lot:** 0041 / 0010**Type:** (RV) Res. Vacant**S-T-R:** N/A**Tax Dist:** (41) 74A-WARNER**Size (Acres):** 0.000**Extended Legal:** WARNER OT S20 LOT 10 &; ALL LOT 11 BLOCK 41**Market and Assessed Values:**

	Taxable Market Value	Full Assessed (11.00% Market Value)
Land:	\$2,925	\$322
Building:	0	0
Total:	\$2,925	\$322

Land:

Land Use	Size	Units
	5850	Square-Feet

Deed Transfers:

Date	Book	Page	Deed Type	Stamps	Est. Sale	Grantor	Code	Type
6/15/2023	4858	47	Leaves	0.00	\$0	BRASUELL, DOROTHY	Title(?)	
9/4/2003	3150	208	W	22.50	\$15,000	AMERICAN LEGION DEPT OF OKLA	Valid	
11/13/2000	2781	165	Q	0.00	\$0	AMERICAN LEGION POST #243		



Table of Contents

Google

(<https://maps.google.com/maps?ll=35.491823,-95.306511&z=20&t=h&hl=en-US&gl=US&mapclient=apiv3>)

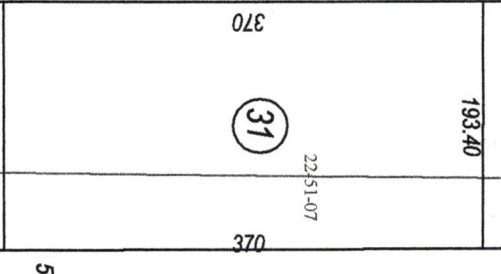
-95.30651, 35.49199

VE

40	9	22-38-05
140	20	
140	8	
40	40	

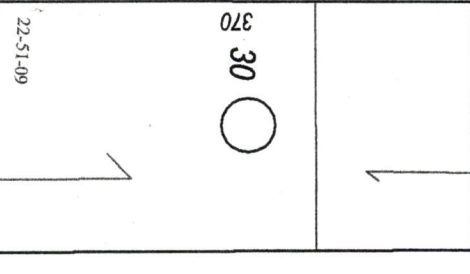
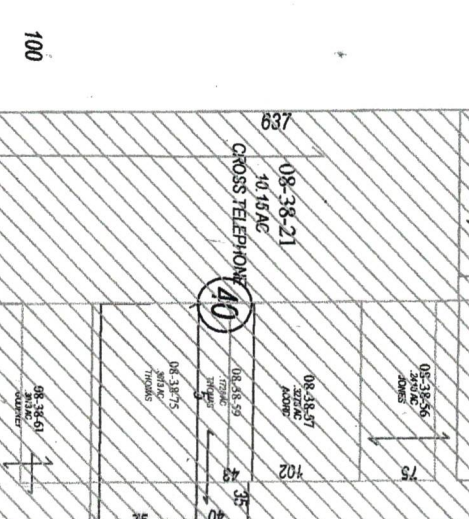
25	13	
140	22-38-19	
20	1	
11	12	
19	13	

08-38-18	18	
08-38-56	15	
08-38-57	14	
08-38-59	13	
08-38-61	12	
08-38-65	11	
08-38-75	10	
08-38-81	9	
08-38-89	8	



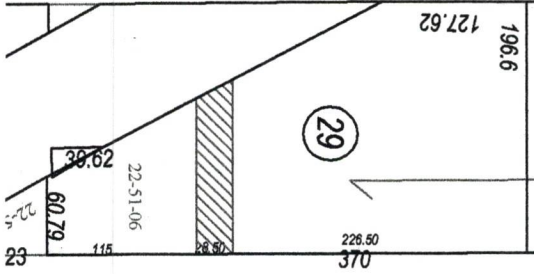
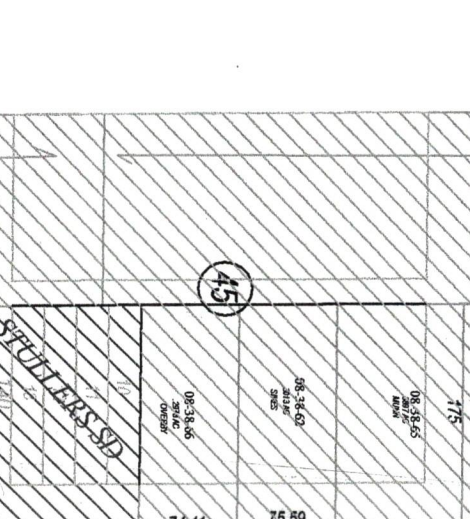
40	16	22-40-27
140	15	
40	14	WESTON FARMS
40	13	22-40-26
40	12	
40	11	
40	10	
40	9	
140	8	
40	7	
40	6	
40	5	FORMER ADVERTISE
40	4	22-40-13
40	3	
40	2	
40	1	

40	20	22-40-08
40	19	
40	18	SEILING SYSTEM
40	17	
40	16	22-40-06
40	15	
40	14	22-40-05
40	13	WESTON FARMS
40	12	
40	11	
40	10	
40	9	
40	8	
40	7	
40	6	
40	5	
40	4	
40	3	
40	2	
40	1	



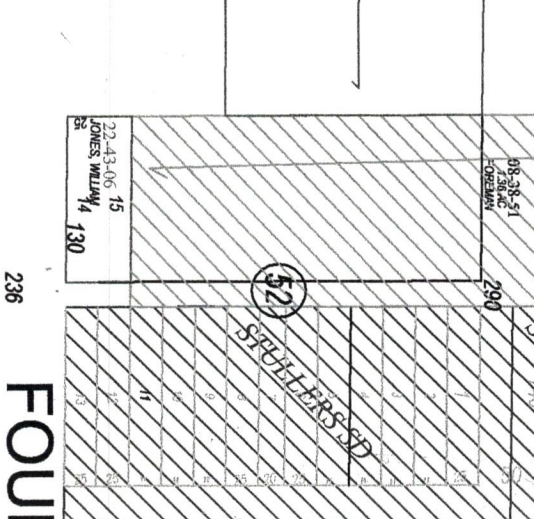
40	16	
40	15	FEWHOUSE
40	14	22-41-03
40	13	
40	12	
40	11	
40	10	
40	9	
140	8	
40	7	22-41-02
40	6	
40	5	
40	4	LOOPER TRUST
40	3	22-41-01
40	2	
40	1	

40	20	22-41-23
40	19	
40	18	LABORATORY
40	17	
40	16	22-41-21
40	15	PALMERS
40	14	22-41-20
40	13	MARTIN BEHAM
40	12	
40	11	
40	10	
40	9	
40	8	
40	7	
40	6	
40	5	
40	4	
40	3	
40	2	
40	1	



40	16	
40	15	
40	14	
40	13	22-43-25
40	12	REED GLENN
40	11	
40	10	
40	9	22-43-24
40	8	REED GLENN
40	7	
40	6	
40	5	22-43-23
40	4	REED GLENN
40	3	
40	2	
40	1	

40	20	22-43-18
40	19	RHELEV
40	18	
40	17	22-43-17
40	16	ADKINS DRIVE
40	15	
40	14	22-43-15
40	13	CARTON DOOR
40	12	
40	11	
40	10	
40	9	
40	8	
40	7	
40	6	
40	5	
40	4	
40	3	
40	2	
40	1	



FOUR