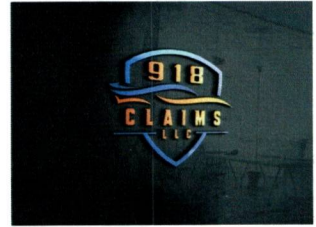


INVOICE

918 Claims LLC
6990 82nd West Ave
Tulsa, OK 74126

918claims@gmail.com
+1 (918) 800-4452



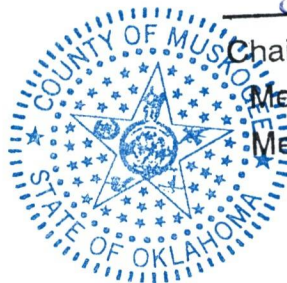
Bill to
ACCO
429 NE 50TH
Oklahoma City, OK 73105

Ship to
ACCO
429 NE 50TH
Oklahoma City, OK 73105

Invoice details

Invoice no.: MUSKOGEE-25 EXPLORER
Terms: Net 30
Invoice date: 05/23/2025
Due date: 06/22/2025

#	Date	Product or service	Description	Qty	Rate	Amount
1.		Appraisal Fee	MUSKOGEE COUNTY SHERIFF C/O JIM DOUGHERTY	1	\$100.00	\$100.00
Total						\$100.00



30th day of May 20 25
Chairman _____
Member _____
Member _____
Attest _____
County Clerk



Austin Reed <918claims@gmail.com>

Fw: Muskogee VIN Numbers

GREG MARTIN <gmartin@muskogeeso.org>
To: "918claims@gmail.com" <918claims@gmail.com>

Fri, May 23, 2025 at 1:33 PM

I'm Greg Martin the Undersheriff of Muskogee County Sheriff's Office.

Austin Reed this how much we gave for the unit involved in the crash 48,785 plus \$15,000 in equipment.

[Get Outlook for iOS](#)

From: KIMBER FARRIS <kfarris@muskogeeso.org>
Sent: Friday, May 23, 2025 1:27:24 PM
To: GREG MARTIN <gmartin@muskogeeso.org>
Subject: Re: Muskogee VIN Numbers

\$48,785 a piece

[Get Outlook for iOS](#)

From: GREG MARTIN <gmartin@muskogeeso.org>
Sent: Friday, May 23, 2025 1:21:47 PM
To: KIMBER FARRIS <kfarris@muskogeeso.org>
Subject: FW: Muskogee VIN Numbers

Can you tell me how much we paid for each one of these units?

GREG MARTIN

UNDERSHERIFF

MUSKOGEE COUNTY SHERIFF'S OFFICE

220 STATE STREET

MUSKOGEE OK 74401

MAIN PHONE: 918-687-0202

DIRECT PHONE: 918-912-2552





5/23/2025

ACCO

Attn: Jim Dougherty

Claim Number: MUSKOGEE-25 EXPLORER

Insured: Muskogee County Sheriff
DOL: 5/15/2025

APPRAISAL REPORT

ATTACHMENTS:

1. Photo Sheet
2. Estimate
3. Report
4. ACV & Salvage Bids

ASSIGNMENT/CONTACT:

IV inspection completed at insured's location in Muskogee, OK today. Heavy front end damages found and all airbags have deployed. Severe structural damages. Large supplement possible for hidden damages to engine and inner structure if vehicle were torn down. All components on front end will need replaced. County said this vehicle has only 3k miles – no power or oil change sticker (first oil change has not been done). They provided the purchase price which I have attached for your review. IV is a total loss at 82%. ACV - \$48,764.50. Detailed photos, estimate, and salvage bids attached. File complete, thank you.

Prepared by,
Austin Reed
(918)800-4452
918 Claims LLC
918claims@gmail.com



30th day of May 2025
Chairman [Signature]
Member [Signature]
Member [Signature]
Attest [Signature] County Clerk

Police Interceptor Utility Base SUV V-6 cyl

97 views in the past 7 days

Exterior Color

☐ Oxford White

Interior Color

☐ Charcoal Black

Body/Seating

SUV/5 seats

Transmission

10-Speed Automatic

Drivetrain

All-Wheel Drive

Engine

V-6 cyl

VIN

1FM5K8AB3SGA76493

Stock Number

YN69

MSRP¹ \$49,600

MSRP¹ \$49,600
Detailed Pricing

Sample Payment²: \$882/mo

60 Months @ 6.9% A.P.R.
(estimated financing rate) \$4,960
Down Payment

Watermark Ford of Marion

1910 West Coolidge
Avenue
Marion IL 62959

Call (618) 993-2161

Highlighted Features

- ⚙ Automatic temperature control
- ⚠ Emergency communication system
- 📶 Wireless phone connectivity
- 🚗 Parking sensors
- 📹 Exterior parking camera rear
- ❄ Front dual zone A/C
- 🌧 Speed sensitive wipers
- ✓ Split folding rear seat
- 🔑 Remote keyless entry
- ✓ Rear air conditioning
- 🎧 Steering wheel mounted audio controls
- ✓ Rear window wiper

[All 17 Highlights](#)

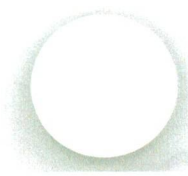
Included Packages & Accessories

4 Speakers

AM/FM radio

Air Conditioning

⚙ Automatic temperature control



Salvage Bids for 2025 FORD POLICE INTERCEPTOR SUV

Trey- B&B Auto Recyclers

405-623-2885

-Bid- \$2,250.00

KEVIN DISHMAN

918-348-5637

-Bid- \$2,800.00

Manneseh Salvage

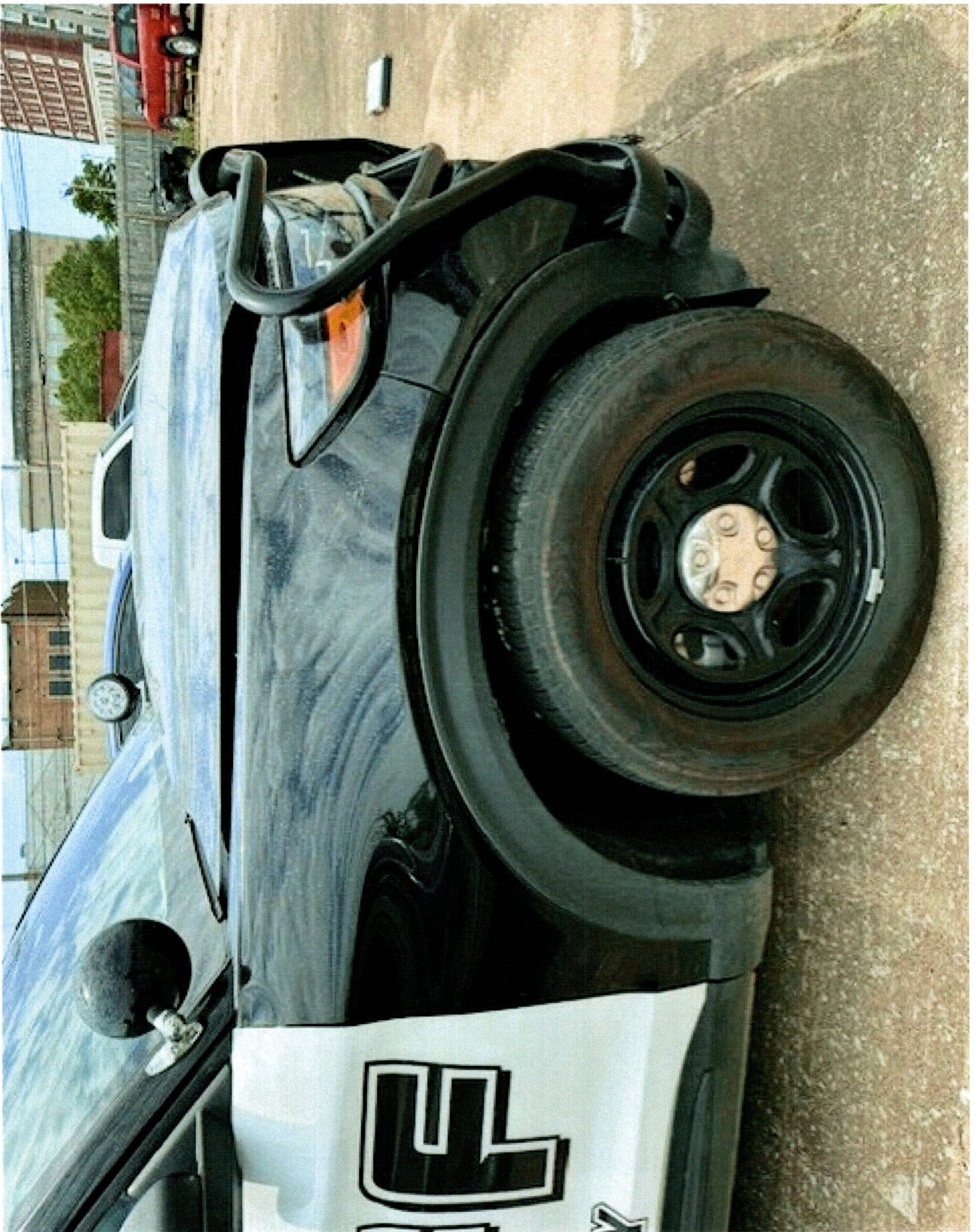
800-897-2106

-Bid- \$2,100.00













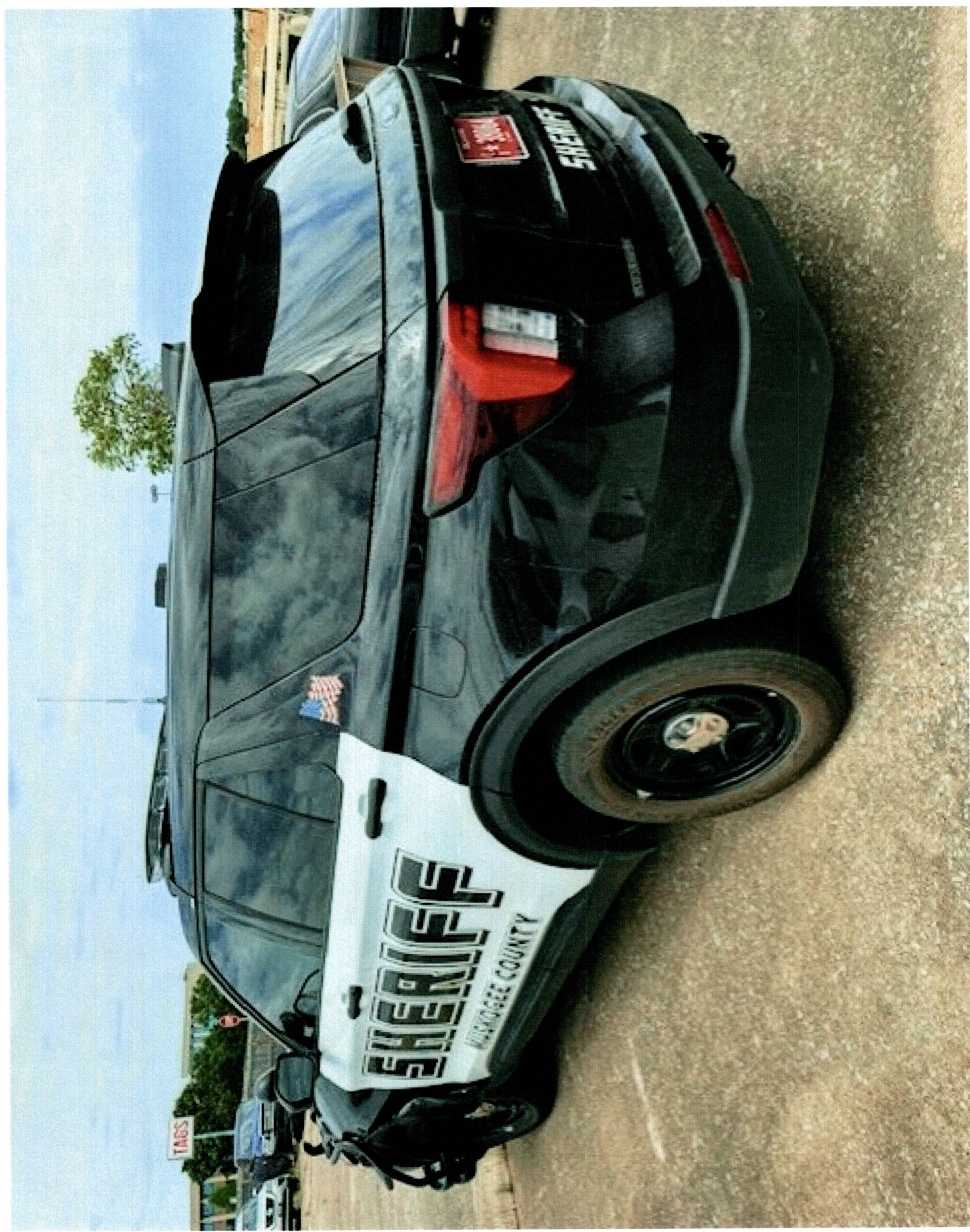
OKLAHOMA

38064



COUNTY

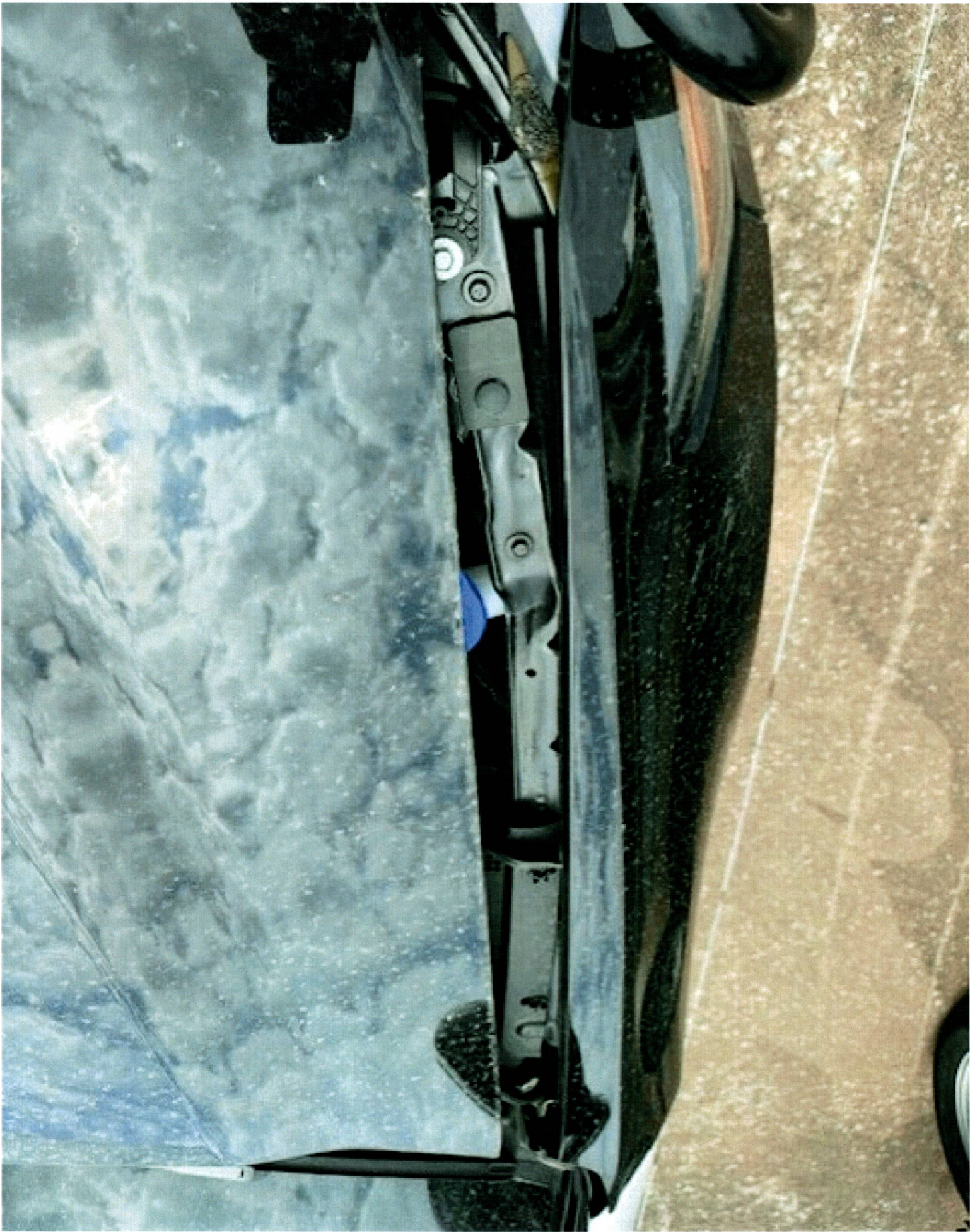
U O















1FM5K8AB4SGA71254



693







MFD. BY FORD MOTOR CO.

DATE: 09/24	GVWR: 2932 KG (6465 LB)	WITH TIRES RIMS
FRONT GAWR:	REAR GAWR:	
1383 KG (3050 LB)	1692 KG (3730 LB)	
255/60R18 108V	255/60R18 108V	
18x8.0J	18x8.0J	
AT 250 kPa/ 36 PSI COLD	AT 260 kPa/ 38 PSI COLD	

THIS VEHICLE CONFORMS TO ALL APPLICABLE FEDERAL MOTOR
VEHICLE SAFETY STANDARDS IN EFFECT ON THE DATE OF
MANUFACTURE SHOWN ABOVE.

VIN: 1FM5K8AB4SGA71254

F0304
T0236

TYPE: NPV



EXT. PNT	UM	RC	56	1D50
W8	1UNT TR	1R	1AXLE	1TR
119	9W	V	3C	U
				PPJJ
				UTC
				V
				SUSA-1520472-BA





918 Claims LLC

Email supplements to 918claims@gmail.com
7937 N 128TH E AVE
OWASSO, OK 74055
Phone: (918) 800-4452
918claims@gmail.com

Workfile ID:

01a1fc02

For:

ACCO**Preliminary Estimate****Owner: MUSKOGEE COUNTY SHERIFF, .****Job Number:**

Written By: Austin Reed
Adjuster: DOUGHERTY, JIM

Insured:	MUSKOGEE COUNTY SHERIFF, .	Policy #:		Claim #:	MUSKOGEECOUNTYSHERIFF
Type of Loss:	Collision	Date of Loss:	5/15/2025 12:00 AM	Days to Repair:	0
Point of Impact:	15 Total Loss				

Owner:

MUSKOGEE COUNTY SHERIFF, .
220 STATE ST
MUSKOGEE, OK 74401
(918) 913-1145 Business

Inspection Location:

MUSKOGEE COUNTY SHERIFF, .
220 STATE ST
MUSKOGEE, OK 74401
Work
(918) 913-1145 Business

Repair Facility:**VEHICLE**

2025 FORD Police Interceptor Utility Vehicle AWD (Fleet) 4D UTV 6-3.3L Flex Fuel Gasoline Direct Injection Black

VIN:	1FM5K8AB4SGA71254	Production Date:	9/2024	Interior Color:	
License:	CO-38064	Odometer:	3,000	Exterior Color:	Black
State:	OK	Condition:	Good		

TRANSMISSION

Automatic Transmission
4 Wheel Drive

POWER

Power Steering
Power Brakes
Power Windows
Power Locks
Power Mirrors
Power Driver Seat
Power Passenger Seat

DECOR

Dual Mirrors
Privacy Glass

Air Conditioning

Intermittent Wipers

Tilt Wheel

Cruise Control

Rear Defogger

Keyless Entry

Alarm

Message Center

Steering Wheel Touch Controls

Rear Window Wiper

Telescopic Wheel

Climate Control

Dual Air Condition

Backup Camera

AM Radio

FM Radio

Stereo

Search/Seek

Auxiliary Audio Connection

SAFETY

Drivers Side Air Bag

Passenger Air Bag

Anti-Lock Brakes (4)

4 Wheel Disc Brakes

Traction Control

Stability Control

Front Side Impact Air Bags

Head/Curtain Air Bags

Blind Spot Detection

SEATS

Cloth Seats

Bucket Seats

Reclining/Lounge Seats

WHEELS

Styled Steel Wheels

PAINT

Clear Coat Paint

OTHER

Rear Spoiler

California Emissions

TRUCK

Trailer Hitch

Preliminary Estimate

Owner: MUSKOGEE COUNTY SHERIFF, .

Job Number:

2025 FORD Police Interceptor Utility Vehicle AWD (Fleet) 4D UTV 6-3.3L Flex Fuel Gasoline Direct Injection Black

Overhead Console
CONVENIENCE

Parking Sensors
RADIO

Hands Free Device
Xenon or L.E.D. Headlamps

Trailer Package

Preliminary Estimate

Owner: MUSKOGEE COUNTY SHERIFF, .

Job Number:

2025 FORD Police Interceptor Utility Vehicle AWD (Fleet) 4D UTV 6-3.3L Flex Fuel Gasoline Direct Injection Black

Line	Oper	Description	Part Number	Qty	Extended Price \$	Labor	Paint
1		FRONT BUMPER					
2		O/H bumper assy				4.0	
3	Repl	Bumper cover	LB5Z17D957SCPTM	1	564.46	Incl.	2.4
4		Add for Clear Coat					1.0
5		Add for fog lamps				0.4	
6		Add for front camera			m	0.2 M	
7	Repl	RT Bracket	LB5Z17C947A	1	40.23	Incl.	
8	Repl	LT Bracket	LB5Z17C947B	1	39.40	Incl.	
9	Repl	RT Side trim w/o fog lamps	LB5Z15A246AA	1	89.50	Incl.	
10	Repl	LT Side trim w/o fog lamps	LB5Z15A245AA	1	78.90	Incl.	
11	Repl	Lower cover	LB5Z17D957BD	1	479.18	Incl.	
12	Repl	Lower molding	LB5Z8419AB	1	180.00	Incl.	
13	Repl	Impact bar w/o towing hook (ALU)	R1MZ17757A	1	626.22	0.6	
14	Repl	Lower deflector	L1MZ8310F	1	214.37	Incl.	
15	Repl	Park sensor	NU5Z15K859AQPTM	1	52.20	m 0.2 S	0.2
16		Add for Clear Coat					0.1
17	Repl	Wire harness	R1MZ15K867EA	1	265.00	Incl. M	
18	#	Repl Westin Grill Guard		1	1,245.00	2.0	
19	#	Rpr Rewire Frt Emergency Lights				2.0	
20		GRILLE					
21	Repl	Grille INTERCEPTOR	LB5Z8200FC	1	613.15	Incl.	
22	Repl	Emblem w/INTERCEPTOR	GJ5Z8213C	1	49.87	Incl.	
23	Repl	RT Insert cover INTERCEPTOR	LB5Z99402A30B	1	20.28	0.1	
24	Repl	LT Insert cover INTERCEPTOR	LB5Z99402A30A	1	20.28	0.1	
25		FRONT LAMPS					
26	Repl	RT Headlamp assy w/o adaptive headlamps level 2 headlamps	RB5Z13008D	1	1,666.67	Incl.	
27		Aim headlamps				0.5	
28	Repl	LT Headlamp assy w/o adaptive headlamps level 2 headlamps	RB5Z13008M	1	1,666.67	Incl.	
29	Repl	Control module w/o adaptive headlamps, w/o prep pack w/o lvl 4 headlamps	ML3Z13C788B	1	773.33	m 0.1 M	
30	Repl	RT Lamp assy red	LB5Z15A101J	1	1,479.05	0.3	
31	Repl	LT Lamp assy red	LB5Z15A101H	1	706.35	0.3	
32		RADIATOR SUPPORT					
33	Repl	Upper tie bar fm 05/13/2024	R1MZ16138F	1	363.93	0.7	1.1
34	Repl	Upper tie bar mount bracket	L1MZ8182A	1	11.62		
35	Repl	Radiator support w/active shutter, w/o Timberline type 2	L1MZ16138P	1	1,025.33	3.5	
36	Repl	Upper seal	L1MZ19892A	1	19.00		
37	Repl	Reinforcement	LB5Z8A284A	1	110.45	0.2	
38	Repl	Air deflector w/INTERCEPTOR	LB5Z8312B	1	189.03	0.2	

Preliminary Estimate

Owner: MUSKOGEE COUNTY SHERIFF, .

Job Number:

2025 FORD Police Interceptor Utility Vehicle AWD (Fleet) 4D UTV 6-3.3L Flex Fuel Gasoline Direct Injection Black

39	Repl	Lower deflector INTERCEPTOR	RB5Z8327B	1	89.15	Incl.	
40	Repl	Skid plate w/INTERCEPTOR	L1MZ78001A08B	1	552.42	0.1	
41	COOLING						
42	Repl	Radiator	L1MZ8005P	1	444.67 m	2.7 M	
43	Repl	Reservoir	R1MZ8A080A	1	270.63 m	0.4 M	
44	Repl	Fan assy w/tow pkg.	P1MZ8C607E	1	561.82 m	Incl. M	
45	Repl	Trans cooler	L1MZ7A095B	1	261.67 m	0.9 M	
46	Repl	Hose & tube assy	L1MZ7A031E	1	126.50	M	
47	Repl	Outlet tube	P1MZ7R081B	1	455.00		
48	Repl	Aux cooler	L1MZ7869B	1	146.83 m	0.2 M	
49	Repl	Tube assy	L1MZ7G071M	1	59.80	M	
50	AIR CONDITIONER & HEATER						
51	Repl	Condenser	L1MZ19712B	1	434.55 m	Incl. M	
52		AC Service evacuate & recharge			m	1.4 M	
53		AC Service refrigerant recovery			m	0.4 M	
54	Repl	AC tube	L1MZ19972CA	1	141.45 m	0.5 M	
55	Repl	AC line	L1MZ19A834M	1	245.45 m	1.5 M	
56	Repl	Pressure tube	L1MZ19D742CA	1	127.27 m	0.7 M	
57	Repl	Evaporator tube	L1MZ19835AB	1	101.82 m	0.7 M	
58	Repl	Clutch & pulley	L1MZ19D786E	1	309.09	M	
59	HOOD						
60	Repl	Hood (ALU)	LB5Z16612A	1	1,092.65	1.1	3.0
61		Add for Clear Coat					1.2
62		Add for Underside(Complete)					1.5
63	Repl	Front w'strip	LB5Z16B990A	1	49.23	Incl.	
64	Repl	RT Hinge	LB5Z16796A	1	118.53	0.3	0.5
65		Overlap Minor Panel					-0.2
66	Repl	LT Hinge	LB5Z16797A	1	117.22	0.3	0.5
67		Overlap Minor Panel					-0.2
68	Repl	Latch	LB5Z16700B	1	110.25	Incl.	
69	FENDER						
70	Repl	LT Fender w/o HEV	RB5Z16006B	1	489.60	2.7	2.0
71		Overlap Major Adj. Panel					-0.4
72		Add for Clear Coat					0.3
73		Add for Edging					0.5
74	Repl	RT Fender w/o HEV	RB5Z16005B	1	500.83	2.7	2.0
75		Overlap Major Adj. Panel					-0.4
76		Add for Clear Coat					0.3
77		Add for Edging					0.5
78	R&I	LT Fender liner				Incl.	
79	R&I	RT Fender liner				Incl.	
80	*	Repl LT Lower rail w/o 3.3 liter HEV (UHS)	N1MZ7810009A	1	1,769.85 s	<u>10.0</u>	0.8
81		Overlap Minor Panel					-0.2
82	*	Repl RT Lower rail w/o 3.3 liter HEV	R1MZ7810008A	1	1,080.37 s	<u>10.0</u>	0.8

Preliminary Estimate

Owner: MUSKOGEE COUNTY SHERIFF, .

Job Number:

2025 FORD Police Interceptor Utility Vehicle AWD (Fleet) 4D UTV 6-3.3L Flex Fuel Gasoline Direct Injection Black

		(UHS)					
83		Overlap Minor Panel					-0.2
84	ENGINE						
85		R&I R&I engine assy			m	8.5	M
86	FRONT SUSPENSION						
87		Repl Susp crossmember INTERCEPTOR	NB5Z5C145D	1	965.23	m	6.2 M
88		Deduct for Overlap					-4.3 M
89		Repl Protector	LB5Z5F078B	1	485.08		
90	WINDSHIELD						
91		Repl Windshield FORD, all	RB5Z7803100A	1	727.78		3.3
92	#	Sealant Kit		1	25.00		
93	RESTRAINT SYSTEMS						
94		Repl Driver air bag ST, INTERCEPTOR	RB5Z78043B13AA	1	409.32	m	Incl. M
95		Air bag system diagnosis ck system operation				m	0.5 M
96		Air bag system diagnosis pinpoint test				m	2.1 M
97		Repl Psngr air bag	RB5Z78044A74A	1	579.60	m	0.4 M
98		Repl RT Head air bag	LB5Z78042D94C	1	813.05	m	0.6 M
99		Repl LT Head air bag	LB5Z78042D95C	1	813.05	m	0.6 M
100		Repl LT Knee air bag	LB5Z78045J77AA	1	347.15	m	0.5 M
101		Repl Clockspring w/heated strng whl w/INTERCEPTOR	LV4Z14A664A	1	260.12	m	1.2 M
102		Repl Control module	RB5Z14B321A	1	462.17	m	0.3 M
103		Repl RT Ft impact sensor	L1TZ14B004A	1	52.18	m	0.3 M
104		Repl LT Ft impact sensor	L1TZ14B004A	1	52.18	m	0.3 M
105		Repl RT Side impact sens front	ML3Z14B345A	1	57.22	m	0.3 M
106		Repl LT Side impact sens front	ML3Z14B345A	1	57.22	m	0.3 M
107		Repl RT Seat belt assy ebony	LB5Z78611B08AA	1	369.18	m	0.3 M
108		Repl LT Seat belt assy ebony	LB5Z78611B09AA	1	330.05	m	0.3 M
109		R&I RT Height adjuster					0.1
110		Refn LT Height adjuster					
111		R&I LT Height adjuster					0.1
112		Repl RT Buckle end w/INTERCEPTOR	LB5Z7861202AA	1	177.97		0.2 M
113		Repl LT Buckle end w/INTERCEPTOR	KS7Z5461203CA	1	129.28		0.2 M
114	FRONT DOOR						
115	*	Rpr LT Door shell					<u>2.0</u> 2.4
116		Overlap Major Adj. Panel					-0.4
117		Add for Clear Coat					0.4
118		Add for Edging					0.5
119		Add for Inside					0.5
120	#	R&I Detrim Door					2.0
121	*	Rpr RT Door shell					<u>2.0</u> 2.4
122		Overlap Major Adj. Panel					-0.4
123	*	Add for Clear Coat					0.4

Preliminary Estimate

Owner: MUSKOGEE COUNTY SHERIFF, .

Job Number:

2025 FORD Police Interceptor Utility Vehicle AWD (Fleet) 4D UTV 6-3.3L Flex Fuel Gasoline Direct Injection Black

124		Add for Edging				0.5
125		Add for Inside				0.5
126	#	R&I Detrim Door			2.0	
127	VEHICLE DIAGNOSTICS					
128	*	Rpr Pre-repair scan		m	1.0	M
129	*	Rpr Post-repair scan		m	1.0	M
130	#	Rpr Unibody Pull			6.0	F
131	#	Corrosion Protection	1	8.00	0.2	
132	#	Alignment	1	89.95	X	
133	#	Rpr Inspect for Engine Damages			1.0	M
134		OTHER CHARGES				
135	#	E.P.C.	1	3.00		
SUBTOTALS				29,459.90	91.5	23.9

ESTIMATE TOTALS

Category	Basis			Rate	Cost \$
Parts					29,366.95
Body Labor	53.8 hrs	@		\$ 65.00 /hr	3,497.00
Paint Labor	23.9 hrs	@		\$ 65.00 /hr	1,553.50
Mechanical Labor	31.5 hrs	@		\$ 125.00 /hr	3,937.50
Frame Labor	6.0 hrs	@		\$ 75.00 /hr	450.00
Structural Labor	0.2 hrs	@		\$ 75.00 /hr	15.00
Paint Supplies	23.9 hrs	@		\$ 45.00 /hr	1,075.50
Miscellaneous					89.95
Other Charges					3.00
Subtotal					39,988.40
Total Cost of Repairs					39,988.40
Deductible					0.00
Total Adjustments					0.00
Net Cost of Repairs					39,988.40

WARNING : ANY PERSON WHO KNOWINGLY, AND WITH INTENT TO INJURE, DEFRAUD OR DECEIVE ANY INSURER, MAKES ANY CLAIM FOR THE PROCEEDS OF AN INSURANCE POLICY CONTAINING ANY FALSE, INCOMPLETE OR MISLEADING INFORMATION IS GUILTY OF A FELONY.

Preliminary Estimate

Owner: MUSKOGEE COUNTY SHERIFF, .

Job Number:

2025 FORD Police Interceptor Utility Vehicle AWD (Fleet) 4D UTV 6-3.3L Flex Fuel Gasoline Direct Injection Black

Estimate based on MOTOR CRASH ESTIMATING GUIDE and potentially other third party sources of data. Unless otherwise noted, (a) all items are derived from the Guide DR2MF20, CCC Data Date 05/15/2025, and potentially other third party sources of data; and (b) the parts presented are OEM-parts. OEM parts are manufactured by or for the vehicle's Original Equipment Manufacturer (OEM) according to OEM's specifications for U.S. distribution. OEM parts are available at OE/Vehicle dealerships or the specified supplier. OPT OEM (Optional OEM) or ALT OEM (Alternative OEM) parts are OEM parts that may be provided by or through alternate sources other than the OEM vehicle dealerships with discounted pricing. Asterisk (*) or Double Asterisk (**) indicates that the parts and/or labor data provided by third party sources of data may have been modified or may have come from an alternate data source. Tilde sign (~) items indicate MOTOR Not-Included Labor operations. The symbol (<>) indicates the refinish operation WILL NOT be performed as a separate procedure from the other panels in the estimate. Non-Original Equipment Manufacturer aftermarket parts are described as Non OEM, A/M or NAGS. Used parts are described as LKQ, RCY, or USED. Reconditioned parts are described as Recond. Recored parts are described as Recore. NAGS Part Numbers and Benchmark Prices are provided by National Auto Glass Specifications. Labor operation times listed on the line with the NAGS information are MOTOR suggested labor operation times. NAGS labor operation times are not included. Pound sign (#) items indicate manual entries.

Some 2024 vehicles contain minor changes from the previous year. For those vehicles, prior to receiving updated data from the vehicle manufacturer, labor and parts data from the previous year may be used. The CCC ONE estimator has a list of applicable vehicles. Parts numbers and prices should be confirmed with the local dealership.

The following is a list of additional abbreviations or symbols that may be used to describe work to be done or parts to be repaired or replaced:

SYMBOLS FOLLOWING PART PRICE:

m=MOTOR Mechanical component. s=MOTOR Structural component. T=Miscellaneous Taxed charge category. X=Miscellaneous Non-Taxed charge category.

SYMBOLS FOLLOWING LABOR:

D=Diagnostic labor category. E=Electrical labor category. F=Frame labor category. G=Glass labor category. M=Mechanical labor category. S=Structural labor category. (numbers) 1 through 4=User Defined Labor Categories.

OTHER SYMBOLS AND ABBREVIATIONS:

Adj.=Adjacent. Algn.=Align. ALU=Aluminum. A/M=Aftermarket part. Blnd=Blend. BOR=Boron steel. CAPA=Certified Automotive Parts Association. CFC=Carbon Fiber. D&R=Disconnect and Reconnect. HSS=High Strength Steel. HYD=Hydroformed Steel. Incl.=Included. LKQ=Like Kind and Quality. LT=Left. MAG=Magnesium. Non-Adj.=Non Adjacent. NSF=NSF International Certified Part. O/H=Overhaul. Qty=Quantity. Refn=Refinish. Repl=Replace. R&I=Remove and Install. R&R=Remove and Replace. Rpr=Repair. RT=Right. SAS=Sandwiched Steel. Sect=Section. STS=Stainless Steel. Subl=Sublet. UHS=Ultra High Strength Steel. N=Note(s) associated with the estimate line.

CCC ONE Estimating - A product of CCC Intelligent Solutions Inc.

The following is a list of abbreviations that may be used in CCC ONE Estimating that are not part of the MOTOR CRASH ESTIMATING GUIDE:

BAR=Bureau of Automotive Repair. EPA=Environmental Protection Agency. NHTSA= National Highway Transportation and Safety Administration. PDR=Paintless Dent Repair. VIN=Vehicle Identification Number.

918 Claims LLC

Email supplements to 918claims@gmail.com
7937 N 128TH E AVE
OWASSO, OK 74055
Phone: (918) 800-4452
918claims@gmail.com

Workfile ID:

01a1fc02

For:

ACCO**Preliminary Estimate****Owner: MUSKOGEE COUNTY SHERIFF, .****Job Number:**

Written By: Austin Reed
Adjuster: DOUGHERTY, JIM

Insured:	MUSKOGEE COUNTY SHERIFF, .	Policy #:		Claim #:	MUSKOGEECOUNTYSHERIFF
Type of Loss:	Collision	Date of Loss:	5/15/2025 12:00 AM	Days to Repair:	0
Point of Impact:	15 Total Loss				

Owner:

MUSKOGEE COUNTY SHERIFF, .
220 STATE ST
MUSKOGEE, OK 74401
(918) 913-1145 Business

Inspection Location:

MUSKOGEE COUNTY SHERIFF, .
220 STATE ST
MUSKOGEE, OK 74401
Work
(918) 913-1145 Business

Repair Facility:**VEHICLE**

2025 FORD Police Interceptor Utility Vehicle AWD (Fleet) 4D UTV 6-3.3L Flex Fuel Gasoline Direct Injection Black

VIN:	1FM5K8AB4SGA71254	Production Date:	9/2024	Interior Color:	
License:	CO-38064	Odometer:	3,000	Exterior Color:	Black
State:	OK	Condition:	Good		

TRANSMISSION

Automatic Transmission
4 Wheel Drive

POWER

Power Steering
Power Brakes
Power Windows
Power Locks
Power Mirrors
Power Driver Seat
Power Passenger Seat

DECOR

Dual Mirrors
Privacy Glass

Air Conditioning

Intermittent Wipers

Tilt Wheel

Cruise Control

Rear Defogger

Keyless Entry

Alarm

Message Center

Steering Wheel Touch Controls

Rear Window Wiper

Telescopic Wheel

Climate Control

Dual Air Condition

Backup Camera

AM Radio

FM Radio

Stereo

Search/Seek

Auxiliary Audio Connection

SAFETY

Drivers Side Air Bag

Passenger Air Bag

Anti-Lock Brakes (4)

4 Wheel Disc Brakes

Traction Control

Stability Control

Front Side Impact Air Bags

Head/Curtain Air Bags

Blind Spot Detection

SEATS

Cloth Seats

Bucket Seats

Reclining/Lounge Seats

WHEELS

Styled Steel Wheels

PAINT

Clear Coat Paint

OTHER

Rear Spoiler

California Emissions

TRUCK

Trailer Hitch

Preliminary Estimate

Owner: MUSKOGEE COUNTY SHERIFF, .

Job Number:

2025 FORD Police Interceptor Utility Vehicle AWD (Fleet) 4D UTV 6-3.3L Flex Fuel Gasoline Direct Injection Black

Overhead Console

CONVENIENCE

Parking Sensors

RADIO

Hands Free Device

Xenon or L.E.D. Headlamps

Trailer Package

Preliminary Estimate

Owner: MUSKOGEE COUNTY SHERIFF, .

Job Number:

2025 FORD Police Interceptor Utility Vehicle AWD (Fleet) 4D UTV 6-3.3L Flex Fuel Gasoline Direct Injection Black

Line	Oper	Description	Part Number	Qty	Extended Price \$	Labor	Paint
1		FRONT BUMPER					
2		O/H bumper assy				4.0	
3	Repl	Bumper cover	LB5Z17D957SCPTM	1	564.46	Incl.	2.4
4		Add for Clear Coat					1.0
5		Add for fog lamps				0.4	
6		Add for front camera			m	0.2 M	
7	Repl	RT Bracket	LB5Z17C947A	1	40.23	Incl.	
8	Repl	LT Bracket	LB5Z17C947B	1	39.40	Incl.	
9	Repl	RT Side trim w/o fog lamps	LB5Z15A246AA	1	89.50	Incl.	
10	Repl	LT Side trim w/o fog lamps	LB5Z15A245AA	1	78.90	Incl.	
11	Repl	Lower cover	LB5Z17D957BD	1	479.18	Incl.	
12	Repl	Lower molding	LB5Z8419AB	1	180.00	Incl.	
13	Repl	Impact bar w/o towing hook (ALU)	R1MZ17757A	1	626.22	0.6	
14	Repl	Lower deflector	L1MZ8310F	1	214.37	Incl.	
15	Repl	Park sensor	NU5Z15K859AQPTM	1	52.20 m	0.2 S	0.2
16		Add for Clear Coat					0.1
17	Repl	Wire harness	R1MZ15K867EA	1	265.00	Incl. M	
18	#	Repl Westin Grill Guard		1	1,245.00	2.0	
19	#	Rpr Rewire Frt Emergency Lights				2.0	
20		GRILLE					
21	Repl	Grille INTERCEPTOR	LB5Z8200FC	1	613.15	Incl.	
22	Repl	Emblem w/INTERCEPTOR	GJ5Z8213C	1	49.87	Incl.	
23	Repl	RT Insert cover INTERCEPTOR	LB5Z99402A30B	1	20.28	0.1	
24	Repl	LT Insert cover INTERCEPTOR	LB5Z99402A30A	1	20.28	0.1	
25		FRONT LAMPS					
26	Repl	RT Headlamp assy w/o adaptive headlamps level 2 headlamps	RB5Z13008D	1	1,666.67	Incl.	
27		Aim headlamps				0.5	
28	Repl	LT Headlamp assy w/o adaptive headlamps level 2 headlamps	RB5Z13008M	1	1,666.67	Incl.	
29	Repl	Control module w/o adaptive headlamps, w/o prep pack w/o lvl 4 headlamps	ML3Z13C788B	1	773.33 m	0.1 M	
30	Repl	RT Lamp assy red	LB5Z15A101J	1	1,479.05	0.3	
31	Repl	LT Lamp assy red	LB5Z15A101H	1	706.35	0.3	
32		RADIATOR SUPPORT					
33	Repl	Upper tie bar fm 05/13/2024	R1MZ16138F	1	363.93	0.7	1.1
34	Repl	Upper tie bar mount bracket	L1MZ8182A	1	11.62		
35	Repl	Radiator support w/active shutter, w/o Timberline type 2	L1MZ16138P	1	1,025.33	3.5	
36	Repl	Upper seal	L1MZ19892A	1	19.00		
37	Repl	Reinforcement	LB5Z8A284A	1	110.45	0.2	
38	Repl	Air deflector w/INTERCEPTOR	LB5Z8312B	1	189.03	0.2	

Preliminary Estimate

Owner: MUSKOGEE COUNTY SHERIFF, .

Job Number:

2025 FORD Police Interceptor Utility Vehicle AWD (Fleet) 4D UTV 6-3.3L Flex Fuel Gasoline Direct Injection Black

39	Repl	Lower deflector INTERCEPTOR	RB5Z8327B	1	89.15	Incl.	
40	Repl	Skid plate w/INTERCEPTOR	L1MZ78001A08B	1	552.42	0.1	
41	COOLING						
42	Repl	Radiator	L1MZ8005P	1	444.67 m	2.7 M	
43	Repl	Reservoir	R1MZ8A080A	1	270.63 m	0.4 M	
44	Repl	Fan assy w/tow pkg.	P1MZ8C607E	1	561.82 m	Incl. M	
45	Repl	Trans cooler	L1MZ7A095B	1	261.67 m	0.9 M	
46	Repl	Hose & tube assy	L1MZ7A031E	1	126.50	M	
47	Repl	Outlet tube	P1MZ7R081B	1	455.00		
48	Repl	Aux cooler	L1MZ7869B	1	146.83 m	0.2 M	
49	Repl	Tube assy	L1MZ7G071M	1	59.80	M	
50	AIR CONDITIONER & HEATER						
51	Repl	Condenser	L1MZ19712B	1	434.55 m	Incl. M	
52		AC Service evacuate & recharge			m	1.4 M	
53		AC Service refrigerant recovery			m	0.4 M	
54	Repl	AC tube	L1MZ19972CA	1	141.45 m	0.5 M	
55	Repl	AC line	L1MZ19A834M	1	245.45 m	1.5 M	
56	Repl	Pressure tube	L1MZ19D742CA	1	127.27 m	0.7 M	
57	Repl	Evaporator tube	L1MZ19835AB	1	101.82 m	0.7 M	
58	Repl	Clutch & pulley	L1MZ19D786E	1	309.09	M	
59	HOOD						
60	Repl	Hood (ALU)	LB5Z16612A	1	1,092.65	1.1	3.0
61		Add for Clear Coat					1.2
62		Add for Underside(Complete)					1.5
63	Repl	Front w'strip	LB5Z16B990A	1	49.23	Incl.	
64	Repl	RT Hinge	LB5Z16796A	1	118.53	0.3	0.5
65		Overlap Minor Panel					-0.2
66	Repl	LT Hinge	LB5Z16797A	1	117.22	0.3	0.5
67		Overlap Minor Panel					-0.2
68	Repl	Latch	LB5Z16700B	1	110.25	Incl.	
69	FENDER						
70	Repl	LT Fender w/o HEV	RB5Z16006B	1	489.60	2.7	2.0
71		Overlap Major Adj. Panel					-0.4
72		Add for Clear Coat					0.3
73		Add for Edging					0.5
74	Repl	RT Fender w/o HEV	RB5Z16005B	1	500.83	2.7	2.0
75		Overlap Major Adj. Panel					-0.4
76		Add for Clear Coat					0.3
77		Add for Edging					0.5
78	R&I	LT Fender liner				Incl.	
79	R&I	RT Fender liner				Incl.	
80	*	Repl LT Lower rail w/o 3.3 liter HEV (UHS)	N1MZ7810009A	1	1,769.85 s	<u>10.0</u>	0.8
81		Overlap Minor Panel					-0.2
82	*	Repl RT Lower rail w/o 3.3 liter HEV	R1MZ7810008A	1	1,080.37 s	<u>10.0</u>	0.8

Preliminary Estimate

Owner: MUSKOGEE COUNTY SHERIFF, .

Job Number:

2025 FORD Police Interceptor Utility Vehicle AWD (Fleet) 4D UTV 6-3.3L Flex Fuel Gasoline Direct Injection Black

83		(UHS) Overlap Minor Panel						-0.2
84	ENGINE							
85		R&I R&I engine assy			m		8.5 M	
86	FRONT SUSPENSION							
87		Repl Susp crossmember INTERCEPTOR	NB5Z5C145D	1	965.23 m		6.2 M	
88		Deduct for Overlap						-4.3 M
89		Repl Protector	LB5Z5F078B	1	485.08			
90	WINDSHIELD							
91		Repl Windshield FORD, all	RB5Z7803100A	1	727.78		3.3	
92	#	Sealant Kit		1	25.00			
93	RESTRAINT SYSTEMS							
94		Repl Driver air bag ST, INTERCEPTOR	RB5Z78043B13AA	1	409.32 m		Incl. M	
95		Air bag system diagnosis ck system operation			m		0.5 M	
96		Air bag system diagnosis pinpoint test			m		2.1 M	
97		Repl Psngr air bag	RB5Z78044A74A	1	579.60 m		0.4 M	
98		Repl RT Head air bag	LB5Z78042D94C	1	813.05 m		0.6 M	
99		Repl LT Head air bag	LB5Z78042D95C	1	813.05 m		0.6 M	
100		Repl LT Knee air bag	LB5Z78045J77AA	1	347.15 m		0.5 M	
101		Repl Clockspring w/heated strng whl w/INTERCEPTOR	LV4Z14A664A	1	260.12 m		1.2 M	
102		Repl Control module	RB5Z14B321A	1	462.17 m		0.3 M	
103		Repl RT Ft impact sensor	L1TZ14B004A	1	52.18 m		0.3 M	
104		Repl LT Ft impact sensor	L1TZ14B004A	1	52.18 m		0.3 M	
105		Repl RT Side impact sens front	ML3Z14B345A	1	57.22 m		0.3 M	
106		Repl LT Side impact sens front	ML3Z14B345A	1	57.22 m		0.3 M	
107		Repl RT Seat belt assy ebony	LB5Z78611B08AA	1	369.18 m		0.3 M	
108		Repl LT Seat belt assy ebony	LB5Z78611B09AA	1	330.05 m		0.3 M	
109		R&I RT Height adjuster					0.1	
110		Refn LT Height adjuster						
111		R&I LT Height adjuster					0.1	
112		Repl RT Buckle end w/INTERCEPTOR	LB5Z7861202AA	1	177.97		0.2 M	
113		Repl LT Buckle end w/INTERCEPTOR	KS7Z5461203CA	1	129.28		0.2 M	
114	FRONT DOOR							
115	*	Rpr LT Door shell					<u>2.0</u>	2.4
116		Overlap Major Adj. Panel						-0.4
117		Add for Clear Coat						0.4
118		Add for Edging						0.5
119		Add for Inside						0.5
120	#	R&I Detrim Door					2.0	
121	*	Rpr RT Door shell					<u>2.0</u>	2.4
122		Overlap Major Adj. Panel						-0.4
123	*	Add for Clear Coat						0.4

Preliminary Estimate

Owner: MUSKOGEE COUNTY SHERIFF, .

Job Number:

2025 FORD Police Interceptor Utility Vehicle AWD (Fleet) 4D UTV 6-3.3L Flex Fuel Gasoline Direct Injection Black

124		Add for Edging				0.5
125		Add for Inside				0.5
126	#	R&I Detrim Door			2.0	
127	VEHICLE DIAGNOSTICS					
128	*	Rpr Pre-repair scan		m	1.0	M
129	*	Rpr Post-repair scan		m	1.0	M
130	#	Rpr Unibody Pull			6.0	F
131	#	Corrosion Protection	1	8.00	0.2	
132	#	Alignment	1	89.95	X	
133	#	Rpr Inspect for Engine Damages			1.0	M
134		OTHER CHARGES				
135	#	E.P.C.	1	3.00		
SUBTOTALS				29,459.90	91.5	23.9

ESTIMATE TOTALS

Category	Basis	Rate	Cost \$
Parts			29,366.95
Body Labor	53.8 hrs @	\$ 65.00 /hr	3,497.00
Paint Labor	23.9 hrs @	\$ 65.00 /hr	1,553.50
Mechanical Labor	31.5 hrs @	\$ 125.00 /hr	3,937.50
Frame Labor	6.0 hrs @	\$ 75.00 /hr	450.00
Structural Labor	0.2 hrs @	\$ 75.00 /hr	15.00
Paint Supplies	23.9 hrs @	\$ 45.00 /hr	1,075.50
Miscellaneous			89.95
Other Charges			3.00
Subtotal			39,988.40
Total Cost of Repairs			39,988.40
Deductible			0.00
Total Adjustments			0.00
Net Cost of Repairs			39,988.40

WARNING : ANY PERSON WHO KNOWINGLY, AND WITH INTENT TO INJURE, DEFRAUD OR DECEIVE ANY INSURER, MAKES ANY CLAIM FOR THE PROCEEDS OF AN INSURANCE POLICY CONTAINING ANY FALSE, INCOMPLETE OR MISLEADING INFORMATION IS GUILTY OF A FELONY.

Preliminary Estimate

Owner: MUSKOGEE COUNTY SHERIFF, .

Job Number:

2025 FORD Police Interceptor Utility Vehicle AWD (Fleet) 4D UTV 6-3.3L Flex Fuel Gasoline Direct Injection Black

Estimate based on MOTOR CRASH ESTIMATING GUIDE and potentially other third party sources of data. Unless otherwise noted, (a) all items are derived from the Guide DR2MF20, CCC Data Date 05/15/2025, and potentially other third party sources of data; and (b) the parts presented are OEM-parts. OEM parts are manufactured by or for the vehicle's Original Equipment Manufacturer (OEM) according to OEM's specifications for U.S. distribution. OEM parts are available at OE/Vehicle dealerships or the specified supplier. OPT OEM (Optional OEM) or ALT OEM (Alternative OEM) parts are OEM parts that may be provided by or through alternate sources other than the OEM vehicle dealerships with discounted pricing. Asterisk (*) or Double Asterisk (**) indicates that the parts and/or labor data provided by third party sources of data may have been modified or may have come from an alternate data source. Tilde sign (~) items indicate MOTOR Not-Included Labor operations. The symbol (<>) indicates the refinish operation WILL NOT be performed as a separate procedure from the other panels in the estimate. Non-Original Equipment Manufacturer aftermarket parts are described as Non OEM, A/M or NAGS. Used parts are described as LKQ, RCY, or USED. Reconditioned parts are described as Recond. Recored parts are described as Recore. NAGS Part Numbers and Benchmark Prices are provided by National Auto Glass Specifications. Labor operation times listed on the line with the NAGS information are MOTOR suggested labor operation times. NAGS labor operation times are not included. Pound sign (#) items indicate manual entries.

Some 2024 vehicles contain minor changes from the previous year. For those vehicles, prior to receiving updated data from the vehicle manufacturer, labor and parts data from the previous year may be used. The CCC ONE estimator has a list of applicable vehicles. Parts numbers and prices should be confirmed with the local dealership.

The following is a list of additional abbreviations or symbols that may be used to describe work to be done or parts to be repaired or replaced:

SYMBOLS FOLLOWING PART PRICE:

m=MOTOR Mechanical component. s=MOTOR Structural component. T=Miscellaneous Taxed charge category. X=Miscellaneous Non-Taxed charge category.

SYMBOLS FOLLOWING LABOR:

D=Diagnostic labor category. E=Electrical labor category. F=Frame labor category. G=Glass labor category. M=Mechanical labor category. S=Structural labor category. (numbers) 1 through 4=User Defined Labor Categories.

OTHER SYMBOLS AND ABBREVIATIONS:

Adj.=Adjacent. Algn.=Align. ALU=Aluminum. A/M=Aftermarket part. Blnd=Blend. BOR=Boron steel. CAPA=Certified Automotive Parts Association. CFC=Carbon Fiber. D&R=Disconnect and Reconnect. HSS=High Strength Steel. HYD=Hydroformed Steel. Incl.=Included. LKQ=Like Kind and Quality. LT=Left. MAG=Magnesium. Non-Adj.=Non Adjacent. NSF=NSF International Certified Part. O/H=Overhaul. Qty=Quantity. Refn=Refinish. Repl=Replace. R&I=Remove and Install. R&R=Remove and Replace. Rpr=Repair. RT=Right. SAS=Sandwiched Steel. Sect=Section. STS=Stainless Steel. Subl=Sublet. UHS=Ultra High Strength Steel. N=Note(s) associated with the estimate line.

CCC ONE Estimating - A product of CCC Intelligent Solutions Inc.

The following is a list of abbreviations that may be used in CCC ONE Estimating that are not part of the MOTOR CRASH ESTIMATING GUIDE:

BAR=Bureau of Automotive Repair. EPA=Environmental Protection Agency. NHTSA= National Highway Transportation and Safety Administration. PDR=Paintless Dent Repair. VIN=Vehicle Identification Number.